



Software Quick Start Guide

Practico

Script Name: Tuesday Practice
Walk Through

Script Period
1 of 10

0
9:

Wireless Play Clock

Wireless Practice Timer

Practice Smart

Close

Computer Volume

eVenue Audio

evenue
Tempo

-1:00 +1:00
25 40
Vol Down Vol Up
J1 J2
Skip Song Restart Period
J3 J4
Prev Period Next Period
J5 J6
Shift Pause Practice
J7

CoachComm

12/27/2015

Getting Started

This Quick Start Guide is a basic reference for information on setting up your eVenue Tempo™ Software. For complete operation instructions, see the eVenue Tempo User Manual, which is available on CoachComm's website at: www.coachcomm.com.

1 Install the software.

Tempo Software is already provided on the eVenue system's Tempo Control Unit. To install Tempo Software on a secondary PC, contact CoachComm for assistance.

Below are the minimum Software Requirements for a secondary installation:

- Processor: 1GHz
- RAM: 512 MB
- Disk Space: 100 MB
- Windows XP or Windows 7 SP1

2 Organize your audio library.

Organize your MP3 audio files within your computer's directory so they can be easily imported into a Tempo script. Do this by placing the files you'd like to use in your Tempo library. All music files must be .mp3 files to play in the software.

To access your Tempo audio library: Click on **Start**, go to **My Computer** and open your (C:\) folder, open the **Tempo** folder, and then open your library.

3 Open a script.

To build a script from scratch, open the Tempo Software and click on **New Script**.

To edit an existing script, select it from the "Available Scripts" List and click on **Open Script**.

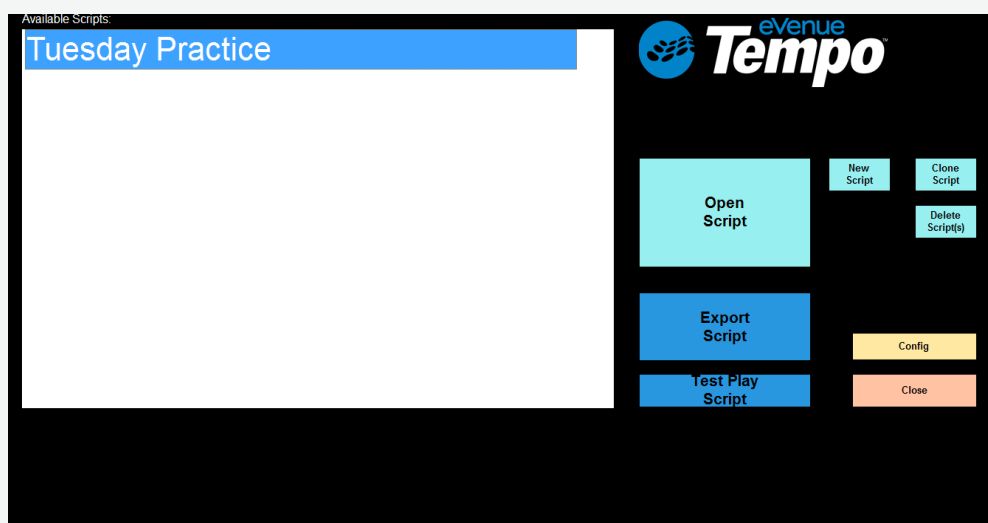


Figure 1: eVenue Tempo Software Home Screen

4 Customize your script.

Edit your script's details in each of the following tabs: **General**, **Periods**, **Effects**, and **One-Touch**. Click **Save** when done on each tab. The "Folder List" on the left-hand side of the screen displays all of the audio folders and files you organized in your Tempo library.

General Tab:

Enter your general practice script settings on the General tab. Here, you can edit the script's name, number of periods, default period length, and length of practice, among others.

Periods Tab:

Enter settings for each period of your script on the Periods tab. This tab allows customization of period display settings, duration overrides, intermissions, period sound effects, and audio files.

Effects Tab:

Set audio files as sound effects for all periods on the Effects tab. Drag your selected audio file from the Folder List to the applicable field to set sound effects for items like period start, period end, clock end, and others. Delete unwanted audio files using the **Clear** button.

One-Touch Tab:

Set specific one-touch buttons for the Tempo touch screen using the One-Touch tab by dragging the selected audio file from the Folder List to the applicable field. Delete unwanted audio files by selecting **Clear**.

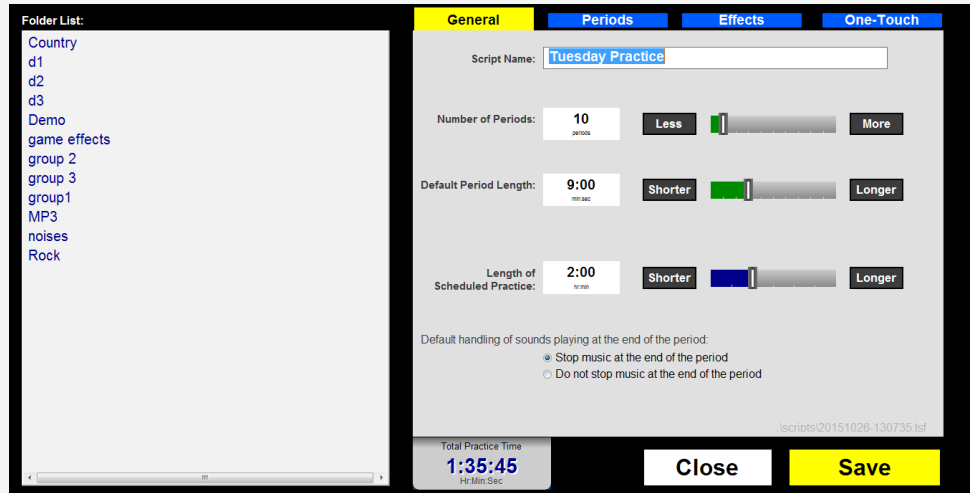


Figure 2: eVenue Tempo Software Edit Screen's General Tab

5 Test your script.

To play back a saved script and test how it will appear on your system, select it from the "Available Scripts" List on the Tempo Home screen and click on **Test Play Script**.

The Test screen displays a model of your Control Unit and any connected wireless clocks as they appear during script playback.

Use the on-screen Tempo remote to model the identical controls you will have on the field.

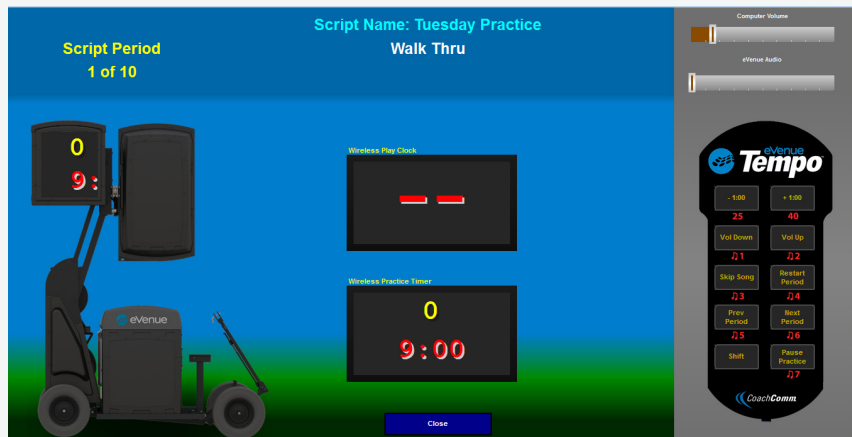


Figure 3: eVenue Tempo Software Test Play Screen

6 Export and play your script.

1. Plug your dedicated Tempo external USB drive into your PC.
2. Select your script from the “Available Scripts” List on the Tempo Home screen. Then, click on **Export Script**.
3. As seen in Figure 4 below, the Export screen will display several columns of information: The Script to Export and all External Drives’ Letter Labels along with their Available Space, Formatted Capacity, Transfer Folder, and Drive Type.
4. Select your dedicated Tempo external drive from the list. The software will only allow you to export one script at a time, and it will overwrite old scripts on your external drive to make sure this is the case.
5. Click the **Begin Export** button. Your script transfer will commence, and the screen will display **Done** when your export is complete.
6. Connect your external USB drive to the eVenue Control Unit’s I/O Panel on its rear, then turn the Control Unit on. The script defaults to a paused state after it loads and opens.
7. Start practice by pressing the Pause Practice button on either the eVenue Tempo remote or Tempest® FX Commando-T controls.

Script to Export	Drive Letter and Volume Name	Available Space	Formatted Capacity	Transfer Folder	Drive Type
Tuesday Practice	P : \	21.3 GB	29.8 GB	No	Removable Disk

Select destination flash drive at right and click Begin Export.

Figure 4: eVenue Tempo Software Export Screen

Contact Information

Customer Service Department

CoachComm, LLC
 Voice: 800-749-2761 or 334-321-2300
 Fax: 866-793-SERV (7378) or 334-821-0397
customer.service@coachcomm.com

©Copyright 2016 CoachComm, LLC. All rights reserved.
 eVenue™ and eVenue Tempo™ are trademarks of CoachComm, LLC. CoachComm® and Tempest® are registered trademarks of CoachComm, LLC. All other trademarks are property of their respective owners.

The eVenue ePod is a patent-pending design, manufactured in the USA.

eVenueTempo2.0SoftwareQSG_D0000247_A