

Getting Started

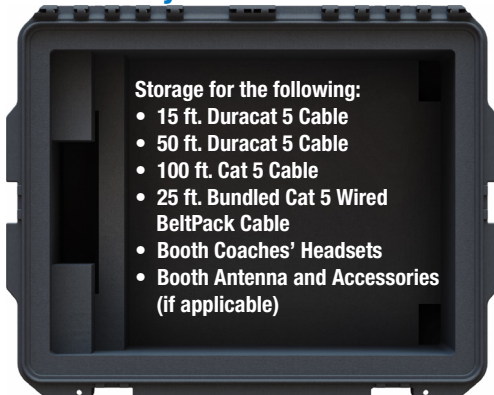
This Game Day Guide is a basic reference for setting up your X-System. For complete operation instructions, see the *X-System Operating Manual*, which is available on CoachComm's website at: www.coachcomm.com/x-system.

CAUTION: Allow only responsible, authorized individuals who have read all of the instructions and warnings to set up and operate your X-System.

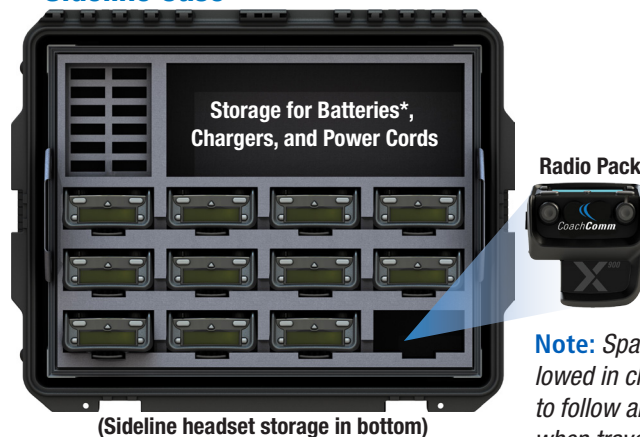
X2 Package Overview



Accessory Case



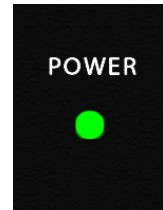
Sideline Case



Note: Spare lithium batteries are not allowed in checked airline baggage. Be sure to follow all air travel rules and regulations when traveling with your X-System.

1 Set up Press Box Rack Unit.

- 1a. Unpack the press box and accessory cases.
- 1b. Position the Press Box Rack Unit out of the way to avoid coaches and other traffic.
- 1c. Connect power to the Press Box Rack Unit, but do NOT turn on the Control Unit (CU) yet. The "Power" LED on the front of the Wired Interface should be lit green.



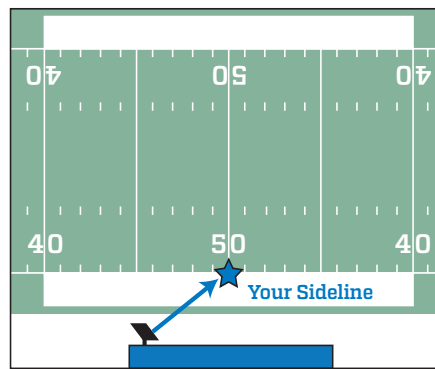
(1c.) Power LED

Important: X-System requires a minimum of one dedicated 15 amp 120V circuit.

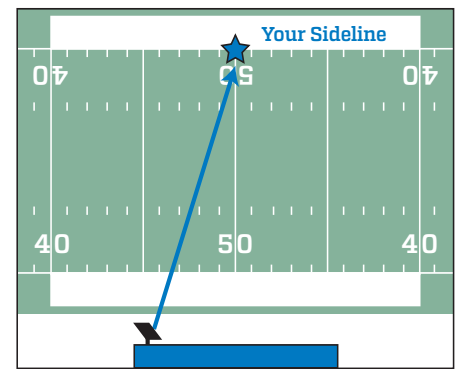
2 Mount and connect the Antenna.

- 2a. Using either the clamp or suction cup mounting hardware, secure the antenna bracket so that the antenna's logo points toward the center of your team's coaches' box.

Note: Any obstructions between the antenna and field (like window tinting) can negatively impact performance. CoachComm recommends opening windows or mounting the antenna externally to the press box. We also recommend covering antennas with a clear plastic bag or a rain cover in the event that rain is expected.



OR

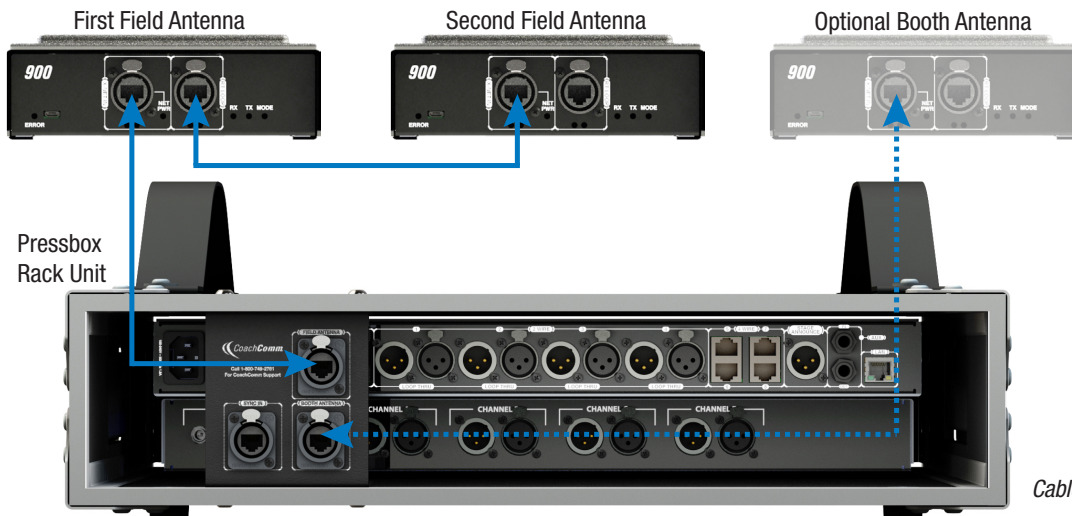


Note: Refer to X2 Manual Appendix B for All Wireless RT placement best practices.

- 2b. Connect a Cat 5 cable to the X-NET IN port on the antenna.
- 2c. Connect the other end of the Cat 5 cable to the FIELD ANTENNA port on the Press Box Rack Unit's rear panel.
- 2d. If using a second field antenna, confirm the short Cat 5 cable is properly connected between the first antenna's RT LOOP port and the second antenna's X-NET IN port.

Note: If applicable, a third antenna for booth wireless can be connected as outlined in the diagram below.

CAUTION: Secure and protect any cords to prevent walkway hazards and potential contact with moisture.



Cables not shown

3 Power on the Control Unit.

- 3a. Power ON the CU via the power switch on its front panel.
- 3b. Use CU navigational controls to select **Home** or **Away** and press the Enter button.

Important: No RF transmission will occur until the Home/Away status is selected. Failure to set this status properly may result in RF interference if and when the opposing team is also using an X-System. It is important to coordinate with opponents to ensure optimal performance for both teams.

- 3c. Wait until the CU displays the following message: “CCF Loaded” along with a configuration file summary. Once the message times out, the home screen will display on the front of the CU.



(3b.) CU Navigation Buttons

CCF Loaded					
Version: 3	Flags: 02	Length:	3,936	Number of Devices: 3	
Device Connection: 2	Control Unit: 1	Expansion: 0	Hub: 0		
Radio Transceiver: 2	Radio Pack: 12	Radio Pack Profile: 12			
Conference: 4	Relay Assignment: 0	Aux Audio Assignment: 0			
User Info Record: 0	Access Rights:	0	UI Data: 0		

(3c.) Sample CCF Loaded Screen

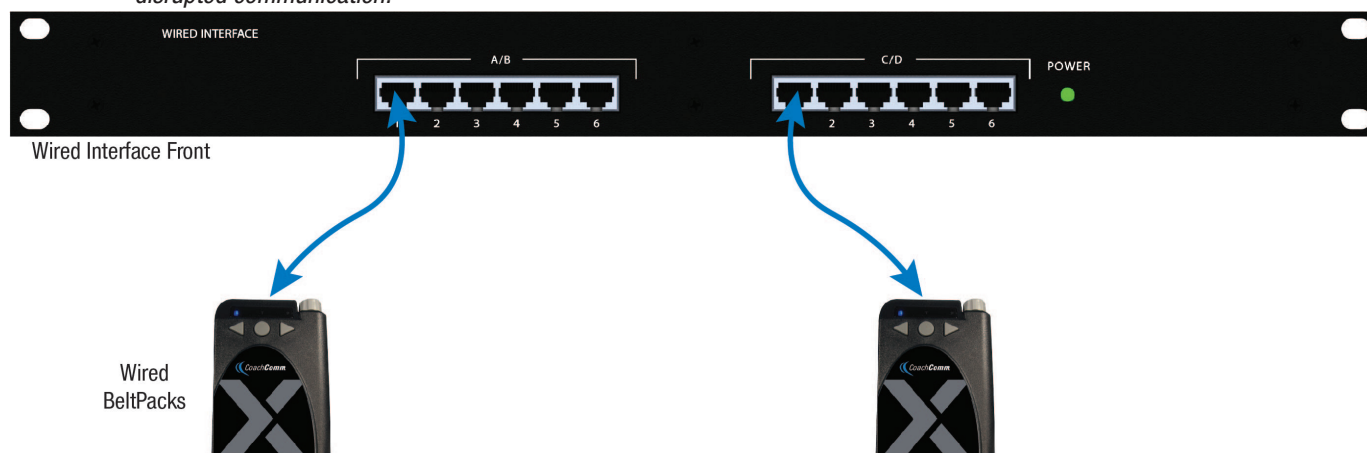
4 Set up the Wired Interface and Wired BeltPacks.

Note: Skip to Step 5 if your X2 does not include the Wired System.

The procedures in this step should be performed with at least two people.

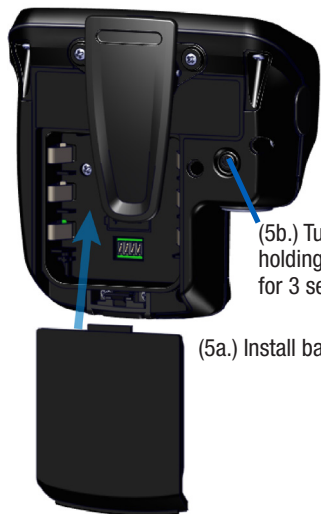
- 4a. Place a Wired BeltPack at each coach’s position in the press box.
- 4b. Connect the short end of the Cat 5 cable bundle to the desired channels on front of the Wired Interface (A/B or C/D).
- 4c. Connect the opposite ends of the bundled cables to each Wired BeltPack.

Important: Keep cables out of the way of coaches and heavy foot traffic. Cables that are pinched, snagged, or damaged will cause disrupted communication.



- 4d. Connect a headset to each Wired BeltPack.
- 4e. Power on each Wired BeltPack by turning the volume knob clockwise. The lights on the front of the BeltPack will illuminate when powered on. Confirm that each Talk button is off.
- 4f. Put on one headset and press the Talk button on the Wired BeltPack and confirm that you can communicate with a second Wired BeltPack on both channels with no crosstalk. Repeat the test for each Wired BeltPack.

5 Power on and walk test Radio Packs.



The procedures in this step should be performed with at least two people.

- 5a. **Install** a fully charged Lithium-Polymer rechargeable battery or three AA alkaline batteries in each Radio Pack (RP).
- 5b. **Power on the first two RPs** by pressing and holding the Power button on the back of the RP for 3 seconds.
- 5c. Confirm each RP is on the same conference, connect a headset to each RP, and **conduct a walk test** to confirm their operation. The RP's LQ value can be used to gauge performance.
- 5d. After walk testing is complete, **place the RP down on a table or bench**. Be sure to place each RP a foot or so apart; bunching RPs together could impact wireless performance. Repeat steps 5b-5c for each of the remaining RPs.
- 5e. **Connect batteries and speakers** to all CoachComm X-System Player Modules to turn them on. **Walk test the entire field** with players above shoulder height. Repeat walk test for all remaining Player Modules.
- 5f. **Confirm communication** between wireless and wired coaches.

6 Power off and stow away.

Once your game has ended, power off and properly stow away all components:

- 6a. Power off all RPs and stow them with the field headsets in the sideline case.
- 6b. Power off and disconnect all Wired BeltPacks and stow them in the press box case.
- 6c. Power off the CU and disconnect the Cat 5 cable between the Press Box Rack Unit and the antennas. Carefully disassemble and stow the antennas and mounting hardware in the appropriate case.
- 6d. Coil all cables and stow them with the press box headsets in the accessory case.
- 6e. Disconnect power from the Press Box Rack Unit and stow it in the press box case.

Important: Thoroughly dry off any moisture prior to storage. Failure to do so can cause components to corrode and damage.